



STOWER PROVOST COMMUNITY SCHOOL

COMPLAINTS POLICY

Ownership	Headteacher
Created	November 2016
Approved by Governors	29/01/2020
Updated (if apt)	January 2020
To be reviewed	01/01/2023

TABLE OF CONTENTS

Introduction	3
What is a Complaint?	3
How to make a Complaint	3
Who can make a Complaint	3
Anonymous Complaints	3
Complaints received out of time	4
Principles of the Procedure	4
Scope of this Complaint Procedure	4
Concurrent Considerations	5
Resolving Complaints	5
Formal Complaints Procedure – Overview	5
Detailed Procedure	5
Stage 1	5
Stage 2	5
Stage 3	6
Unreasonable Complainants	7
Recording	8

Publicity	8
Monitoring the Procedure	8
Useful Contacts	8
Appendix One – Flowchart	10
Appendix Two – Timescales	11
Appendix Three – Roles and Responsibilities	12
Appendix Four – Checklists	15
Appendix Five – School Complaint Form	17

INTRODUCTION

1. Governing Bodies of all maintained schools and maintained nursery schools in England are required, under Section 29 of the [Education Act 2002](#) to have in place a procedure to deal with complaints relating to the school and to any community facilities or services that the school provides. The law also requires the procedure to be publicised.
2. The Secretary of State has direction making powers under sections [496 and 497 of the Education Act 1996](#) and although he is not under a duty to intervene in every case that is brought to his attention, he must always consider whether, in light of the information provided to him by a complainant, he should exercise his powers.
3. Individuals contacting the local authority regarding a school complaint are advised to contact the school directly. The local authority can also provide advice and support to Head Teachers and governors in the operation of their complaints procedures through the Schools' Complaints Service available from April 2013.

WHAT IS A COMPLAINT?

4. A complaint may be generally defined as 'an expression of dissatisfaction or disquiet which requires a response'.
5. Informal complaints – Stower Provost School takes informal concerns seriously and will make efforts to resolve matters earliest stage possible.
6. Formal complaints - This formal procedure will be invoked when initial attempts to resolve the issue are unsuccessful and the person raising the concern remains dissatisfied and wishes to take the matter further.

HOW TO MAKE A COMPLAINT

7. Formal complaints should be made in the first instance, to Stower Provost School Complaints Co-ordinator. A complaint can be made in person, in writing or by telephone and you will be asked to complete a complaints form (Appendix 5). The Complaints Co-ordinator will record the date the complaint is received and will acknowledge in writing (letter or email) receipt of the complaint within 3 school days.

WHO CAN MAKE A COMPLAINT?

8. In essence:
 - Parents, carers and/or children/young people attending the school.
 - Parents, carers and/or children/young people who have recently attended the school. Consideration will be given to complaints lodged within six months of leaving the school.
 - Members of the general public may make complaints to the school if the school is directly responsible for the issue being complained about.
9. There are no grounds for referral of complaints that are not from parent/carers to the Secretary of State or any other body.

ANONYMOUS COMPLAINTS

10. The Complaints Co-ordinator in conjunction with the Head Teacher and Chair of Governors will determine whether the gravity of an anonymous complaint warrants its investigation.

COMPLAINTS RECEIVED OUT OF TERM TIME

11. Complaints made outside of term time will be deemed to have been received on the first school day after the holiday period.

PRINCIPLES OF THE PROCEDURE

12. An effective complaints procedure shall:

- **Not** exclude any group with protected characteristics from making a complaint.
- Encourage resolution of problems by **informal** means wherever possible.
- Be easily **accessible** and **publicised**.
- Be **simple** to understand and use.
- Be **impartial**.
- Be **non-adversarial**.
- Allow **swift** handling with established **time-limits** for action and keeping people informed of the progress.
- Ensure a full and **fair** investigation by an independent person where necessary;
- Respect people's desire for **confidentiality**.
- Address all the points at issue and provide an **effective** response and **appropriate** redress, where necessary.
- Provide **information** to the school's senior management team so that services can be improved (i.e. learning from feedback).
- Have due regard to the principles of the Equality Act 2010 and how they impact upon schools, parents, carers and children/young people.

SCOPE OF THIS COMPLAINT PROCEDURE

13. This procedure covers all complaints with the exception of those listed below, for which there are separate (statutory) procedures.

14. This policy does not cover the following issues:

- admissions to schools;
- exclusion of children/young people from school;
- statutory assessments of special education needs;
- school re-organisation proposals subject to statutory procedures;
- complaints against individual members of staff in relation to their behaviour or competence, including the Head Teacher;
- matters likely to require a Child Protection Investigation;
- whistle-blowing;
- staff grievances and disciplinary procedures;
- complaints about services provided by other providers, such as contractors and other Council service units.

15. Complaints that have already been investigated cannot be considered again. Legal, safeguarding or disciplinary proceedings may take precedence over complaints procedures and timescales.

CONCURRENT CONSIDERATIONS

16. Legal, safeguarding or disciplinary proceedings may take precedence over complaints procedures and timescales.

17. If there is a risk that dealing with a complaint might prejudice a concurrent consideration, the complaints procedure will be suspended until the concurrent consideration is concluded. The Complaints Co-ordinator will write to the complainant explaining the reason for the decision and the nature of the concurrent consideration. Once the concurrent consideration is concluded, the complaint can be investigated as appropriate.

RESOLVING COMPLAINTS

18. At each stage in the procedure, the school will want to resolve the complaint if possible. It might be sufficient to acknowledge that the complaint is valid in whole or in part. In addition, it may be appropriate to offer one or more of the following:

- an apology;
- an explanation;
- an admission that the situation could have been handled differently or better;
- an assurance that the event complained of will not recur;
- an explanation of the steps that have been taken to ensure that it will not happen again;
- an undertaking to review school policies in light of the complaint.

FORMAL COMPLAINTS PROCEDURE – OVERVIEW

19. There are three stages to this procedure:-

<p>Stage 1 – Complaint Heard by Staff Member</p> <p>If that Staff Member is subject to the complaint then the senior manager will investigate as appropriate. This could be the Head Teacher.</p>	<p>Stage 2 – Complaint Heard by Head Teacher</p> <p>If the Head Teacher has already considered at Stage 1, this will be undertaken by the Chair of Governors.</p>	<p>Stage 3 – Complaint Heard by Governing Body Review Panel</p> <p>This will consist of Governors not involved in the complaints process at an earlier stage.</p>
----------------------------------------------------------------------------------------------------------------------------------------------------------------------------------------------------------	--------------------------------------------------------------------------------------------------------------------------------------------------------------------------	--------------------------------------------------------------------------------------------------------------------------------------------------------------------------

DETAILED PROCEDURE

20. Stage 1 – Complaint Heard by Staff Member

20.1 Formal complaints should be made to Mrs Pike, School Complaints Co-ordinator. A complaint can be made in person, in writing or by telephone. The Complaints Co-ordinator will record the date the complaint is received and will acknowledge in writing (letter or email) receipt of the complaint within 3 school days.

20.2 The Member of Staff will investigate the complaint and respond to the Complainant within 10 school days of the date of receipt of the complaint.

21. Stage 2 – Complaint Heard by the Head Teacher

21.1 If the Complainant is dissatisfied with the outcome of the Staff Member’s investigation at Stage 1 and wishes to take the matter further, they can ask for the matter to be considered by the Head Teacher.

21.2 The Head Teacher will acknowledge the complaint within 3 school days. The acknowledgement will include a summary of the complaints procedure and a response date given. This will be within 10 school days. If this date cannot be met, the Complainant will be given an update and revised response date.

21.3 The Head Teacher should provide a formal written response to the Complainant detailing actions taken to investigate the complaint and provide a full explanation of decisions taken and the reasons for them. Where appropriate, it should include details of actions the school will take to resolve the complaint.

21.4 The Complainant should be provided with details of how to contact the Governing body if they are not satisfied with the response.

22. Stage 3 – Complaint Heard by the Governing Body’s Complaints Review Panel

22.1 The Complainant should write to the Chair of Governors giving details of the complaint. Complaints must have been considered by the first two stages before proceeding to panel.

22.2 The Clerk to the Governors should acknowledge the request in writing within 3 school days and inform the Complainant of the right to submit any further documents or information relevant to the complaint. The panel will not consider new complaints – these will be considered at Stage 1. A deadline for submission of these documents should be given. This should be at least 5 days before the hearing.

22.3 The school will submit the Stage 1 and 2 responses together with any written response from the Head Teacher as appropriate. The Head Teacher may also invite members of staff directly involved in matters raised by the Complainant to respond personally or in writing.

22.4 The Clerk to the Governors should convene the complaints committee elected from the Governing Body. The committee should comprise 3 or 5 governors who have had no previous involvement with the complaint. The complaint should not be heard by the entire governing body.

22.5 The Complaints Panel should set a timetable for the hearing and should notify the Complainant of this. The review hearing should be heard within 20 school days of receiving the request.

22.6 The aim of the panel should be to resolve the complaint and achieve reconciliation between the school and the Complainant if this is possible.

22.7 The hearing should be held in private. Any witnesses (other than the Complainant and the Head Teacher) should only attend for the part of the hearing in which they give their evidence. Good practice would be that at no point should the Head Teacher or the parent/carer be left with the complaint panel without the other being present

22.8 Once the panel are satisfied that they have heard all the information they need to make a decision, the Chair of the Panel should explain to the Complainant and the Head Teacher that the committee will consider its decision and respond in writing within 15 school days. The Complainant and the Head Teacher should then leave.

22.9 The panel should then consider the complaint and all the evidence presented. The panel can:

- Uphold the complaint, in whole or in part.

- Dismiss the complaint, in whole or in part.
- Decide on the appropriate action to be taken to resolve the complaint.
- Where appropriate, recommend changes to the school's systems or procedures to prevent similar difficulties in the future.

22.10 A written response detailing the decisions, recommendations and the basis on which these have been made should be sent to the Complainant within 15 school days. The Complainant should be notified of the right to refer their concerns to the Department for Education if they are dissatisfied with the way their complaint has been dealt with.

UNREASONABLE COMPLAINANTS

23. Stower Provost School is committed to dealing with all complaints fairly and impartially and to providing a high quality service to those who complain and they will not normally limit the contact complainants have with the school. However, the school does not expect their staff to tolerate unacceptable behaviour and it will take action to protect staff from that behaviour, including that which is abusive, offensive or threatening.

24. The School defines unreasonable complainants as 'those who, because of the frequency or nature of their contacts with the school, hinder our consideration of their or other people's complaints'.

25. A complaint can be regarded as unreasonable when the person making the complaint:
- Refuses to specify the grounds of a complaint or the outcomes sought by raising the complaint, despite offers of assistance.
 - Refuses to co-operate with the complaints investigation process.
 - Refuses to accept that certain issues are not within the scope of a complaints procedure.
 - Insists on the complaint being dealt with in ways which are incompatible with the adopted complaints procedure or with good practice.
 - Makes unjustified complaints about staff who are trying to deal with the issues, and seeks to have them replaced.
 - Changes the basis of the complaint as the investigation proceeds.
 - Raises numerous, detailed but unimportant questions; insisting that they are answered often immediately or to their own timescales.
 - Repeatedly makes the same complaint and refuses to accept the findings of the investigation into that complaint.
 - Seeks an unrealistic outcome.
 - Has a history of making unreasonable complaints.
 - Makes frequent, lengthy, complicated and stressful contact with staff regarding the complaint in person, in writing and by telephone.
 - Makes covert recordings of meetings.

26. A complaint will also be considered unreasonable if the person making the complaint does so:

- Maliciously.
- Aggressively.
- Using threats, intimidation or violence.
- Using abusive, offensive or discriminatory language.
- Knowing it to be false.
- Using falsified information.
- Makes inappropriate comments on the internet and social networking sites.

27. Whenever possible, the Head Teacher or Chair of Governors should discuss the concerns with the complainant informally before invoking the procedure. If the behaviour continues the Head Teacher should write to the complainant explaining what behaviour is unreasonable and asking them to change it. They can also specify methods of communication and times. Any serious incident of aggression or violence the concerns and action should be put in writing immediately and the Police informed. Please also refer to the Violence at Work Policy. Schools may also seek advice from the Schools' Complaint Service.

RECORDING

28. The Complaints Co-ordinator will record all details of the complaint including:
- Date of receipt.
 - Action taken.
 - Summary of complaint.
 - Brief notes of meetings and telephone calls with the progress of the complaint.
 - Ensure that the staff member subject to a complaint is informed as soon as possible.
 - Any written response.
 - Minutes of any meetings.
 - Final outcome.
 - Learning from complaints.

29. All functions of the complaints procedure should be mindful of the requirements of the Data Protection Act, 1998 and the Freedom of Information Act, 2000

PUBLICITY

30. Details of the school's complaints procedure can be found as follows:
- the school prospectus
 - paper copies available from the office
 - the school website: www.stowerprovost.dorset.sch.uk

MONITORING OF THE PROCEDURE

31. The school will monitor the operation and effectiveness of this complaints procedure as well as how information about complaints is being used to improve services and delivery.

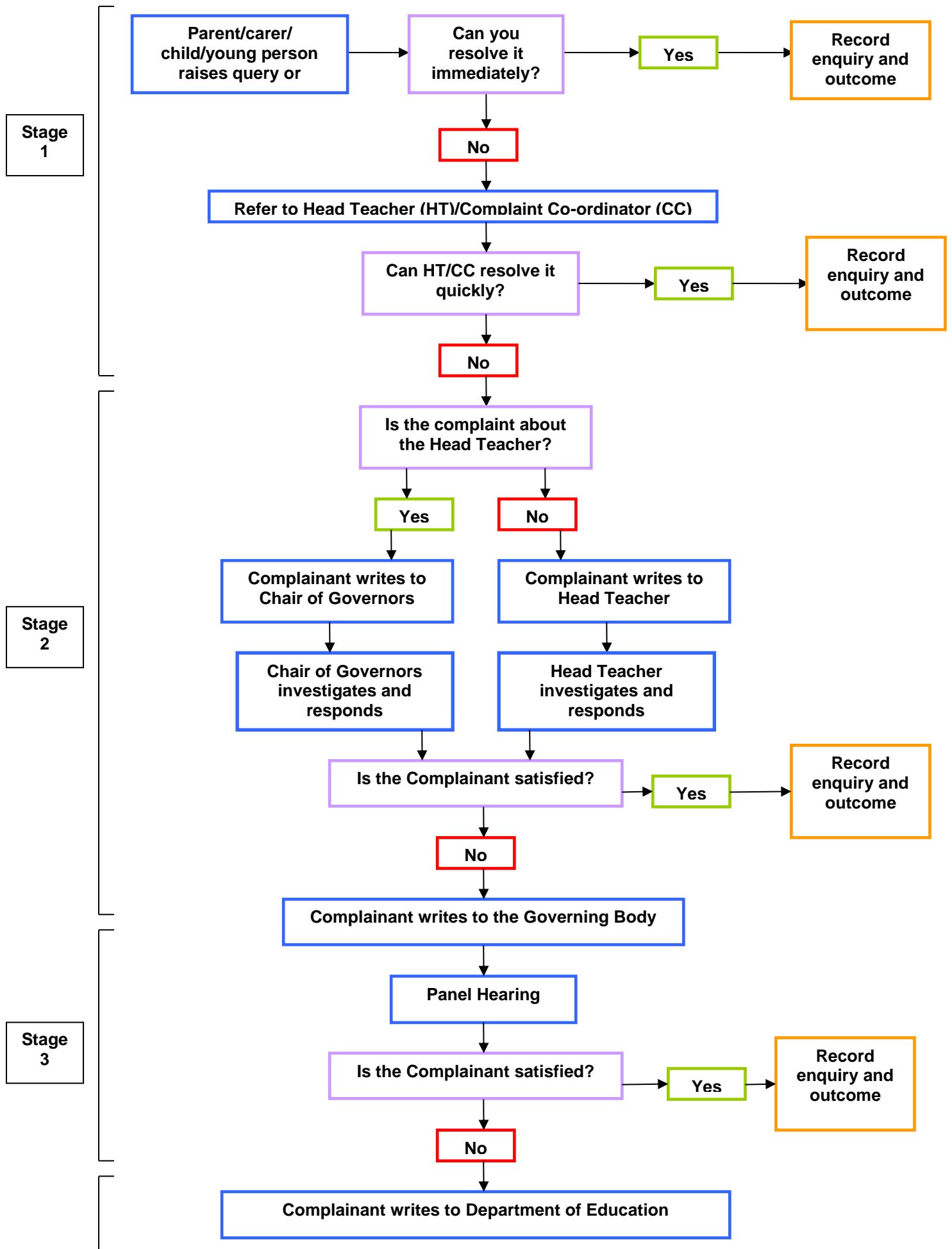
USEFUL CONTACTS

- Stower Provost School Complaints Co-ordinator: Mrs S Pike
- The Department for Education
Castle View House
East Lane
Runcorn
Cheshire
WA7 2GJ
Tel 08700 002 288 www.education.gov.uk
- Schools' Complaint Service

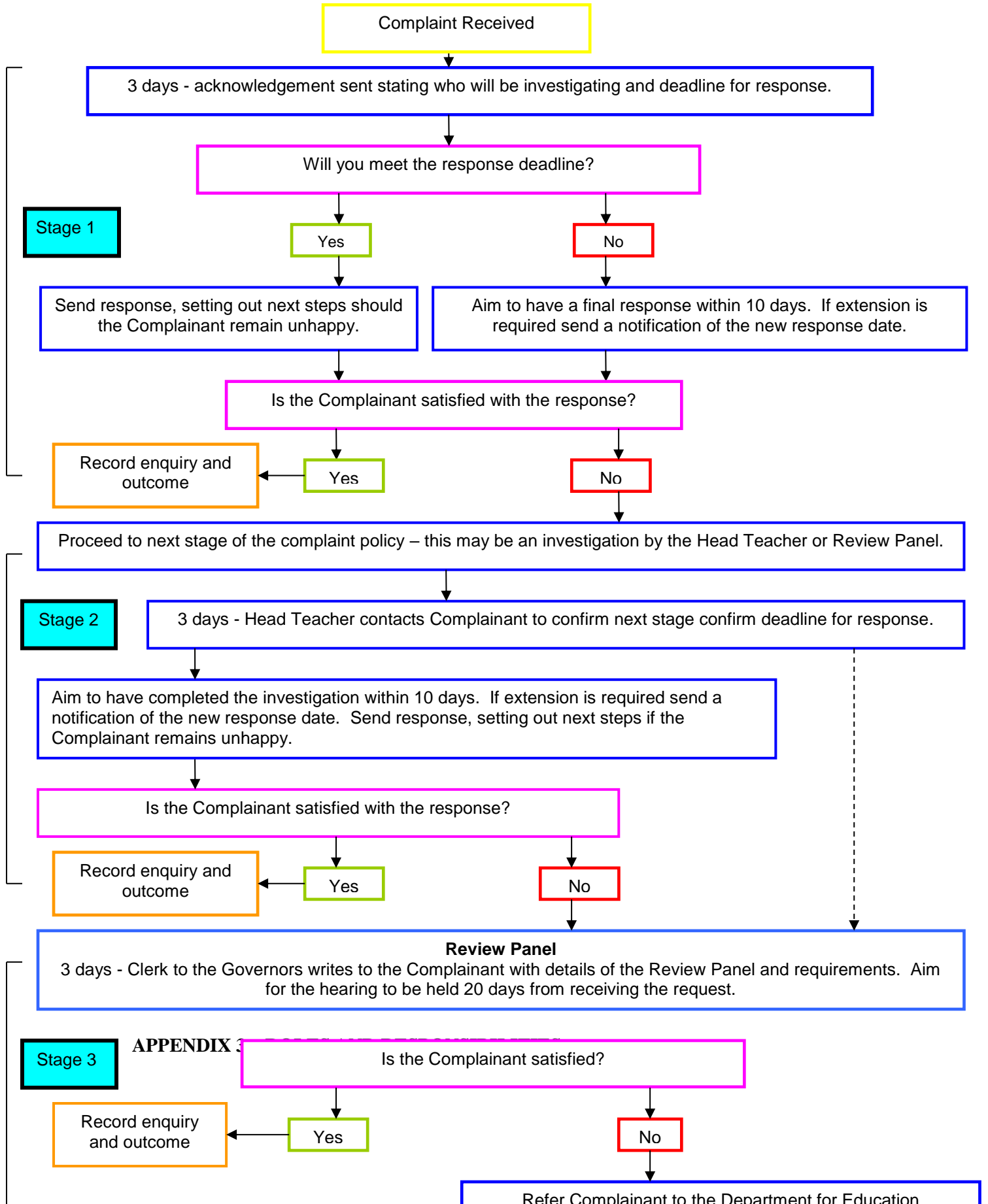
Children's Services Directorate
West Court Wing
County Hall
Dorchester
DT1 1XJ
Tel 01305 225076
Email j.taylor@dorsetcc.gov.uk or s.j.k.turnbull@dorsetcc.gov.uk

This document can be made available in other formats including Braille, audio and large print and other languages.

APPENDIX 1 – FLOW CHART



APPENDIX 2 – TIMESCALES



THE COMPLAINANT

1. The complainant or person who makes the complaint will receive a more effective response to the complaint if he/she:

- Co-operates with the school in seeking a solution to the complaint.
- Expresses the complaint in full as early as possible.
- Responds promptly to requests for information or meetings or in agreeing the details of the complaint.
- Asks the Complaints Co-ordinator for assistance as needed.
- Treats all those involved in the complaint with respect.

THE COMPLAINTS CO-ORDINATOR

2. The Complaints Co-ordinator should:

- Ensure that all people involved in the complaint procedure should be aware of the legislation around complaints including the Equality Act 2010, Data Protection Act and Freedom of Information Act.
- Liaise with the Staff Member, Head Teacher, Chair of Governors and Panel Clerk to ensure the smooth running of the complaints procedure.
- Keep records.
- Be aware of issues regarding:-
 - Sharing third party information.
 - Additional support - this may be needed by complainants when making a complaint including interpretation support.
- Ensure that the Complainant is fully updated at each stage of the procedure and that sometimes letters regarding the progress of the complaint may also need to be translated.

THE INVESTIGATOR

3. The Investigator is the person involved in Stages 1 and 2 of the procedure.

- The Investigator's role can include:
- Providing a comprehensive, open, transparent and fair consideration of the complaint through:-
 - Sensitive and thorough interviewing of the Complainant.
 - Consideration of records and other relevant information.
 - Interviewing with staff and children/young peoples and other people relevant to the complaint.
 - Analysing information.
- Effectively liaising with the Complainant and the Complaints Co-ordinator as appropriate.
- Identifying solutions and recommending courses of action to resolve problems.
- Be mindful of the timescales to respond to the Complainant in plain and clear language.

THE PANEL CLERK (THIS COULD BE CLERK TO THE GOVERNORS)

4. The Clerk is the contact point for the Complainant for the panel meeting and is required to:
- Set the date, time and venue of the hearing, ensuring that the dates are convenient to all parties and that the venue and proceedings are accessible.
 - Collate any written material and send it to the parties in advance of the hearing.
 - Meet and welcome the parties as they arrive at the hearing.
 - Record the proceedings.
 - Notify all parties of the panel's decision.
 - Liaise with the Complaints Co-ordinator.

THE PANEL CHAIR

5. The Panel Chair has a key role in ensuring that:-
- The meeting is minuted.
 - The remit of the panel is explained to the parties and each party has the opportunity of putting their case without undue interruption.
 - The issues are addressed.
 - Key findings of fact are made.
 - Parents/carers and others who may not be used to speaking at such a hearing are put at ease. This is particularly important if the Complainant is a child/young person.
 - The hearing is conducted in an informal manner with each party treating the other with respect and courtesy.
 - The layout of the room will set the tone and care is needed to ensure the setting is informal and not adversarial.
 - The panel is open-minded and acts independently.
 - No member of the panel has an external interest in the outcome of the proceedings or any involvement in an earlier stage of the procedure.
 - Each side is given the opportunity to state their case and ask questions.
 - Written material is seen by all parties. If a new issue arises it would be useful to give all parties the opportunity to consider and comment on.
 - Liaise with the Panel Clerk and Complaints Co-ordinator.

PANEL MEMBER

6. Panellists should be aware that:
- It is important that the review panel hearing is independent and impartial and that it is seen to be so.
 - No governor may sit on the panel if they have had a prior involvement in the complaint or in the circumstances surrounding it.
 - In deciding the make-up of the panel, governors need to try and ensure that it is a cross-section of the categories of governor and sensitive to the issues of race, gender and religious affiliation.
 - The aim of the hearing, which needs to be held in private, will always be to resolve the complaint and achieve reconciliation between the school and the Complainant. However, it has to be recognised the Complainant might not be satisfied with the outcome if the hearing does not find in their favour.
 - It may only be possible to establish the facts and make recommendations which will satisfy the Complainant that his or her complaint has been taken seriously.
 - An effective panel will acknowledge that many complainants feel nervous and inhibited in a formal setting. Parents/carers often feel emotional when discussing an issue that affects their child or young person.
 - The panel chair will ensure that the proceedings are as welcoming as possible.

- The layout of the room will set the tone and care is needed to ensure the setting is informal and not adversarial.
- Extra care needs to be taken when the complainant is a child/young person.
- Careful consideration of the atmosphere and proceedings will ensure that the child/young person does not feel intimidated.
- The panel needs to be aware of the views of the child/young person and give them equal consideration to those of adults.
- Where the child/young person's parent/carer is the complainant, it would be helpful to give the parent/carer the opportunity to say which parts of the hearing, if any, the child/young person needs to attend.

NB Governors sitting on the panel need to be aware of the complaints procedure.

APPENDIX 4 - CHECKLISTS

1. Investigation Checklist. The person investigating at each stage of the complaint should:

- Establish what has happened so far, and who has been involved.
- Clarify the nature of the complaint and what remains unresolved.
- Meet with the Complainant or contact them – see *Meeting with the Complainant* below.
- Establish the outcomes that the Complainant is seeking and whether these are achievable through the complaints process.
- Interview those involved in the matter and/or those complained of, allowing them to be accompanied if they wish.
- Conduct interviews with an open mind and be prepared to persist in the questioning.
- Keep notes of interviews.

2. Meeting with Complainant. The investigator should:

- Allow the Complainant to explain how they feel and express any strong emotions – they should feel as if their complaint has been accepted.
- Clarify the complaint and all its individual parts and produce a written record.
- Ask what the Complainant is seeking regarding solution or outcomes.
- Check whether the Complainant needs support of any kind, in order to understand the discussion properly.
- Determine whether they need support during the process i.e. an advocate or any accessibility needs such as signer, hearing loop etc.
- Read the background to the complaint and the relevant legal and administrative policies and procedures.
- Consider whether the complaint could be resolved without further investigation.
- Assess whether the complaints procedure is the most appropriate way of handling this complaint.

3. Interviewing:

3.1 Children/young people

- Children/young people should be interviewed in the presence of another member of staff, or in the case of serious complaints (e.g. where the possibility of criminal investigation exists) in the presence of their parents/carers.
- Care should be taken in these circumstances not to create an intimidating atmosphere.
- Children/young people should be told what the interview is about and that they can have someone with them.

3.2 Staff

- Explain the complaint and your role clearly to the interviewee and confirm that they understand the complaints procedure and their role in it.
- Staff are allowed a colleague to support them at their interview. The colleague should not be anyone likely to be interviewed themselves, including their line manager.
- Use open not leading questions.
- Do not express opinions in words or attitude.
- Ask single not multiple questions, i.e. one question at a time.
- Try to separate ‘hearsay’ evidence from fact by asking interviewees how they know a particular fact.
- Persist with questions if necessary. Do not be afraid to ask the same question twice.

Make notes of each answer given.

- Deal with conflicting evidence by seeking corroborative evidence. If this is not available, discuss with the Complaints Co-ordinator/ Head Teacher/ Chair of Governors the option of a meeting between the conflicting witnesses.
- Make a formal record of the interview from the written notes as soon as possible while the memory is fresh. Show the interviewee the formal record, ask if he has anything to add, and to sign the record as accurate.

4. Complaints Panel Checklist. The panel should ensure that:

- The hearing is as informal as possible.
- Witnesses are only required to attend for the part of the hearing in which they give their evidence.
- After introductions, the Complainant is invited to explain their complaint, outline their desired outcome and be followed by their witnesses.
- The Head Teacher may question the Complainant and the witnesses after each has spoken.
- The Head Teacher is then invited to explain the school's actions, their views on the desired outcomes and be followed by the school's witnesses.
- The Complainant may question both the Head Teacher and the witnesses after each has spoken.
- The panel may ask questions at any point.
- The Complainant is then invited to sum up their complaint.
- The Head Teacher is then invited to sum up the school's actions and response to the Complaint.
- The Chair explains that both parties will hear from the panel within 15 school days.
- Both parties leave together while the panel decide on the issues.

APPENDIX 5 - SCHOOL COMPLAINT FORM

Please complete this form and return it to Mrs S Pike who will acknowledge receipt and explain what action will be taken.

Your name:
Child/young person's name:
Your relationship to the child/young person:
Your Address:
Daytime telephone number:
Evening telephone number:
Email:
Please give concise details of your complaint, what you think the School did wrong or did not do. Include dates, names of witnesses etc.
What action, if any, have you already taken to try to resolve your complaint? (who have you spoken with or written to and what was the outcome?).

What do you think the School should do to resolve matters at this stage?

Please list any paperwork you are attaching:

Do you need the paperwork to be returned to you: Yes/No

Signature: Date:

School Use	
Date form received:	Received by:
Date acknowledgement sent:	Acknowledgement sent by:
Complaint referred to:	Date referred:

Date response sent: